



Touching Hearts, Changing Lives



Beech Brook
HELPING CHILDREN & FAMILIES THRIVE

Annual Report
July 1, 2021–June 30, 2022



At Beech Brook, we believe all children deserve the chance to grow up in safe and healthy families with the support they need to reach their full potential.

Since 1852, that's been our guiding principle. Our work has changed as the times and needs of families have changed, but that belief remains at the heart of our mission.

Today, we touch hearts and change lives for thousands of children and families each year in Northeast Ohio, bringing healing to troubled children, strengthening and supporting parents, and planting the seeds of hope for a brighter future.

Contents

- 3** Letter from Leadership
- 4** Education, Prevention & Early Intervention
- 7** School-Based Mental Health Services
- 10** Foster Care
- 12** Revenue & Expenses
- 14** Board of Directors
- 15** Event Sponsors
- 16** Awards & Accreditations

Touching Hearts, Changing Lives

Dear Friends,

This past year has been an exciting one. With the return of events such as the “Beech Brook 5K Race & Family Fun Run” and our annual fundraiser, which was reimagined as “Bash for the Brook,” it has been fantastic to see everyone in person again!

At the Bash, we were reminded how Beech Brook touches hearts and changes lives. And not only the lives of the individuals we serve, but also the lives of generations that follow. We met Iris (who you will learn more about on page 13) who was in Beech Brook’s School-Based Mental Health program almost 30 years ago!

Today, Iris owns her own business and is raising three wonderful children (who we also got to meet at the Bash!). She is an advocate for people in need in her community because as she says, **“When someone touches your heart and you get help, your heart gives back by helping others, too.”**

This is what Beech Brook means to the people in our community. **Our impact spreads beyond just those we serve. It spreads to the generations that follow, and also to the people they help in turn.**

This past year, Beech Brook touched the hearts of 8,579 children and families. Just as we hope to change lives over time, we must also evolve as an organization to meet the ever-changing needs of our community. Beech Brook is an organization steeped in great tradition, but not so bound to the past that we refuse to advance. Beech Brook was founded in 1852 as an orphanage for children whose parents died during the cholera epidemic.

The epidemic ended, and Beech Brook had to reinvent itself – the first of many times over the last 170 years. Sometimes we have been forced to make those changes, and sometimes we have simply decided to change because it was the right thing to do. But we have always changed and always for the better.

We have a sacred mission to help children and families thrive. To meet the changing needs of our community, the Board of Directors and Beech Brook’s leadership team embarked on a strategic planning initiative. This strategic plan will chart Beech Brook’s course for the next 3 – 5 years.

The plan addresses five key goals:

1. Ensure that we offer quality and sustainable programs to children and families
2. Attract, retain, and develop talented staff
3. Identify other funding opportunities to diversify our revenue
4. Identify ways we can use the Beech Brook campus to the benefit of kids and families
5. Continuously assess and improve infrastructure to support the quality of our services and growth as an organization

We are already making progress!

We continue to build a positive, supportive culture at Beech Brook where staff feel valued, empowered, connected, inspired and part of something meaningful. For the third year in a row, Beech Brook has been chosen as one of Northeast Ohio’s “Top Workplaces.” The annual awards, presented by *The Plain Dealer* and *cleveland.com*, are based solely on the results of a survey that our staff complete.



It is so rewarding to know that staff continue to feel engaged and supported by our organization. We are so proud of our staff and thankful for everything they do every day to make the lives of children better, and also to make Beech Brook a “Top Workplace!”

Recently, our staff have benchmarked over 40 stakeholders to discover what unmet needs exist in our community – and if Beech Brook can help. We are currently working on concepts to meet those needs that will also align with our mission and allow us to use our land for its intended purpose, to serve children and families.

As we move into a new year at Beech Brook, we are excited about the possibilities and the many opportunities we have to grow and serve children and families in ways never imagined 170 years ago. We hope you will join us as we continue to touch hearts and change lives for generations to come.

A handwritten signature in blue ink that reads "Victor J. DeMarco".

Victor J. DeMarco
Board Chair

A handwritten signature in blue ink that reads "Thomas P. Royer".

Thomas P. Royer
President/CEO



“There comes a point where we need to stop just pulling people out of the river. We need to go upstream and find out why they are falling in.”
– Desmond Tutu

Beech Brook’s Family Center, located on Woodland and E.55th Street, is in the heart of the Central Neighborhood, the community with the lowest average household income in Cleveland. Many families struggle against the overwhelming burdens that come with generational poverty, daily exposure to violence, substance abuse, and other forms of chronic and toxic stress. There is a significant need for supportive resources for the people living in this community, and Beech Brook is there for them. Through the Family Center’s programs that offer education, prevention, and early intervention resources, **we help support and strengthen families so that their children have the chance to grow up in safe, healthy and stable homes.**

Our goal is to prevent them from falling in the river in the first place.



Education, Prevention & Early Intervention

Program highlights in the past year



1,488 students

Comprehensive Sex Education:

Classes for kids ages 10-18 about their physical, social and emotional changes based on factual and age-appropriate information



287 participants

Stewards of Children & Body Safety Training:

Various trainings for children, parents, caregivers and teachers to recognize the signs of and prevent child sexual abuse



563 adults

Parenting Classes at the Family Center:

A variety of groups for parents that focus on topics such as positive discipline, anger management and healthy communication



50 parents

Supportive Visitation:

Coaches help parents prepare to get their child back when the child has been removed from their home and taken into custody

Staff Profile



“It only takes one person to believe in you. And when someone else believes in you, you can believe in yourself. Then anything is possible.”

Bridgett Berry

Supervisor of Nurturing Parenting and Supportive Visitation Programs
23 years at Beech Brook

Bridgett's Story

Recently, Bridgett ran into a former client who was only nine years old when they first met. When the former client saw Bridgett, her face lit up and she gave Bridgett a huge hug. This young woman shared that she now has a daughter who is battling mental health issues. Remembering her struggles as a child, she proactively reached out to Beech Brook to help her daughter “because that’s how she got help when she was younger.”

Bridgett has experienced a great deal of change during her time at Beech Brook. After getting her bachelor’s degree, she began leading mental health groups at Beech Brook and worked towards her licensure in social work and a master’s degree, now holding a supervisory position.

Bridgett gives her best to her clients because she knows what kind of care she would want for herself, her child or her family if she needed help. She becomes their cheerleader while also connecting them or their family members to other resources that will help them succeed. Through her work, hearts are touched, lives are transformed, and the impact is felt for generations.

“Beech Brook has helped me grow professionally while also offering the flexibility, support and benefits I need.”

Education, Prevention & Early Intervention Program highlights in the past year



378 families

Family Stability

Homeless Prevention:

Helps prevent evictions and homelessness for at-risk families by providing social services



332 parents

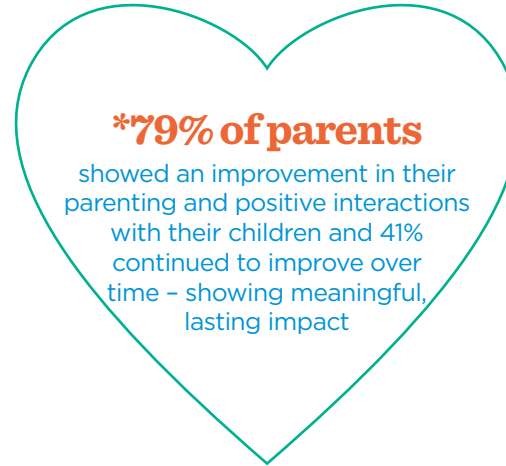


428 children



STEPS:

Parents learn about the importance of play and simple activities to help improve brain development in their babies and toddlers



210 referrals

Police

Assisted Referral:

Mental health professionals support the child and family when police are called to prevent further acts of violence in the home

Other Education, Prevention & Early Intervention Services

**Early Childhood
Mental Health Services**

**Technical Assistance
for Child Care Centers**

to prevent children from being expelled due to challenging behaviors

**StepForward Mental
Health Consultations**
for preschool classrooms

Family Drop-In

for immediate needs and the ability to provide referrals for help

Health Hub

for pregnant women and families

**Healthy Relationships
& Violence Prevention**

Parent Cafés

to discuss worries and concerns with other parents

Family Preservation

24/7 crisis intervention from trained professionals

**Intensive Home-Based
Therapy**

for families in crisis

STRIDE

mentoring program for children

**Outpatient Mental
Health Therapy**

College Now

Telehealth services for college students

School-Based Mental Health Services

Offered at more than 70 schools across Cuyahoga, Lorain, Summit and Geauga counties



Kids who suffer from any kind of behavioral or mental health challenges can have a hard time functioning well in school. They may be having trouble focusing, getting into fights with their peers, or talking back to their teachers during class – behaviors that can lead to suspension and make learning more difficult for everyone. That's where Beech Brook steps in.

Beech Brook's School-Based Mental Health Services

give kids the extra help they need. Teachers, parents, or other school personnel submit a referral to Beech Brook when they see that a child could use extra support from a therapist or mental health professional. A Beech Brook staff member develops a relationship with the student and meets with them at least once a week to address the behaviors that are getting in the way of their learning.

Schools that offer this service see improved attendance and academic performance, along with better behavior and social interactions in their enrolled students.



School-Based Mental Health Services

In the past year



1,670 children

Helped through the
School-Based Program



30 children

Prevented from going into higher levels of care, such as
detention homes or residential treatment, through SAFE



817 children & adults

Helped by mental health professionals through REACH to teach
critical life skills in schools, homes, and the community



Dawn Fitch

Family Life Specialist (REACH)

4 1/2 years at Beech Brook

Dawn came to Beech Brook wanting to make a difference in children's lives — and she certainly does. Through weekly one-on-one sessions, Dawn helps her clients understand that making better choices will positively impact their lives. Her greatest wish for her clients, the vulnerable kids and families served by Beech Brook, is that they grow up in a world with more love, more compassion, and more kindness.

Dawn teaches and empowers the kids and families she works with to learn critical life skills like mindfulness, self-awareness and self-respect. But she also shows them what she wants them to experience most: love, compassion, and kindness.

Through her work at Beech Brook, she makes her greatest wish for her clients come true.

“Everyone experiences bumps in the road. You can either stay there, or you can process it, learn from it, and move forward.”

Dawn's Story

Dawn worked with a family of four brothers, who she saw every week. The oldest was not doing well in school and was failing most subjects, but Dawn saw he was sweet and helpful with his younger brothers. After nine months of working with him, he made the Honor Roll. The family moved away at the end of the school year, but they kept in touch. Sadly, the boy who was so happy to have achieved a spot on his school's Honor Roll, was killed just a few months later. He was 12.

Sitting on the front steps of the family's home after the funeral, one of the younger brothers noticed Dawn had cried at the funeral.

“You really love us, don't you? Why do you do this?” he asked.

Through her tears, Dawn said, “Yes, I do. I do this work because it's important to me. I was created to help people, to hear what they have to say, and what they're thinking.”

And the brother said, **“But now you're our family. You were there for us.”**

School Partnerships with Chardon, Orange, and Twinsburg

Beech Brook partners with several school districts to provide the same services as our other school-based programs, but to any student needing support — with or without a referral. In addition to one-on-one therapy sessions, Beech Brook staff also lead group therapy sessions and provide trainings on topics requested by the school or parents, such as suicide prevention or education about the dangers of vaping.

Beech Brook Partner Schools

Chardon Local
Schools

378

children
& parents

Orange City
School District

224

children
& parents

Twinsburg City
School District

708

children
& staff





“At Beech Brook, the mission always matters most.”

Pauline Congeni, MSW, LSW

School-Based Therapist

21 years at Beech Brook

Pauline’s Story

Pauline worked with a young boy who was very impulsive and angry, two traits that were getting in his way at school. He was a gifted athlete — a natural in basketball, football, and track. Pauline could see his potential, but if he couldn’t get his emotions under control, he would lose opportunities that would come his way.

He consistently gave her a hard time and resisted any kind of connection. It took two years for him to begin trusting her, but her perseverance paid off. When he stopped resisting her help, his behavior improved immensely. He went to college and won a National Championship in Relay and now works as a hospital administrator. Pauline’s dedication gave him confidence and a stronger belief in himself.

She taught him that he mattered, that he had support, and that he could do anything he set his mind to.

Pauline’s career of service to kids and families started out in an unexpected place — in a hair salon. Before becoming a therapist, she was a hair stylist who talked to people of all ages every day and, naturally, would hear all about their lives. She found that she could relate and enjoyed those conversations, so she decided to pursue a career specifically helping people with their problems.

After 21 years at Beech Brook, Pauline is as dedicated as ever to the mission of helping kids and families thrive.

She sees Beech Brook as an organization with good leadership that stands behind their word and supports the staff.

Pauline wishes for all the kids she helps that they know the feeling of being loved and supported, that they grow up believing that people can be good and that everyone has the potential to have a happy life.

Staff Profile



Donalvyn Smith

Foster Parent Recruiter
19 years at Beech Brook

Don Smith started out as a floater 19 years ago, helping anywhere he was needed: driving a school bus, supervising kids in cottages, and even working with maintenance. Beech Brook's leadership saw how easily Don was able to establish rapport with the kids and created a position for him as the first **wraparound worker*** in Foster Care.

As one of eight children with supportive parents who were together for over 50 years, Don knows how much he relied on his family when he was growing up. Kids in Foster Care do not have that built-in support. The trauma they experience, both from their home environment and being removed from that home, is ongoing and stressful. **Don's wish for his clients is that they experience a more positive upbringing, to know what it feels like to have support, love and comfort.**

“Showing and modeling kindness and understanding is a way to give back.”

Don's Story

Don remembers a seven-year-old boy in Foster Care with lots of energy. They developed a good relationship, and the boy liked and trusted him.

One day at a playground, the boy playfully started running toward a busy street. Don hollered at him to stop, but the child kept running. Afraid the boy could get hit by a car, Don yelled louder and more aggressively. Because he had never heard Don speak to him that way, the boy stopped, his instincts took over, and he angrily lashed out.

Don knew not to take his reaction personally, so he apologized for yelling and explained he was trying to keep him safe. Because Don modeled grace and compassion, their relationship quickly recovered.

Months later, the boy's foster mom showed Don a calendar the boy was keeping with a countdown of the days until Don's birthday. **The compassion and support Don modeled for him worked – and the boy, just like Don, wanted to give something back.**

Foster Care



There are many reasons why a child is removed from their parents' custody. Maybe they have been neglected and have been coming to school in the same clothes day after day or look malnourished, causing someone to call Child Protective Services for an investigation. The child could have been sexually or physically abused. Sometimes the child's parent is incarcerated or has passed away. If there is no close family member

who is willing to take them, they enter Foster Care.

Beech Brook finds and trains foster parents, people who are willing to open their home to a child who desperately needs some stability. Regardless of the reason for entering Foster Care, these children have been through severe trauma and need support, not only from their foster parents, but also from mental health professionals.

Did you know?



60 children
live with Beech Brook
Foster Care Families



23 children
were placed
in the past year

***Beech Brook's wraparound workers** support the foster parents and provide training for issues that may arise when hosting a traumatized child in their home. They also help the children by forming relationships with them and giving them someone to talk to. Perhaps more than any other children served at Beech Brook, these children lack any familial support, at least for the time being, and need to know that there are people who care for them.

And that's what Beech Brook's staff and foster parents aim to do: show these children they matter and have support.



FACTS*



More than
23,000 kids
age out of Foster Care
every year



20% of foster youth
will become homeless
the day they age out



Only
50% of foster kids
who age out without additional support will
have gainful employment by the age of 24

* Source: National Foster Youth

Bridges

When kids in Foster Care turn 18 years old, they immediately “age out” and are no longer able to receive the support they had from the county. Beech Brook’s Bridges program offers additional guidance and support for these young adults until they turn 21. We help them find affordable housing and assist with paying rent and utilities.

We also help them get their GED or enroll in college, depending on their situation, and find steady employment. Rather than forcing them out on their own before they are ready, **the Bridges program gives former foster youth the option for any additional support they may need to build a healthy life.**



48 young adults
were provided additional support from Bridges
in the past year



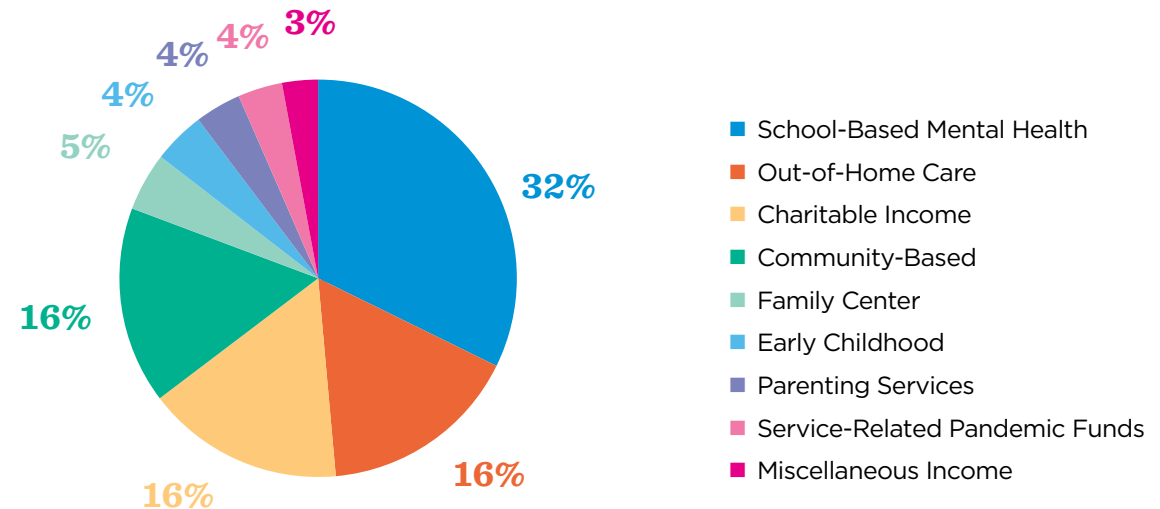
Revenue & Expenses

July 1, 2021 – June 30, 2022



Total Operating Revenue: \$10,711,236

OPERATING REVENUE



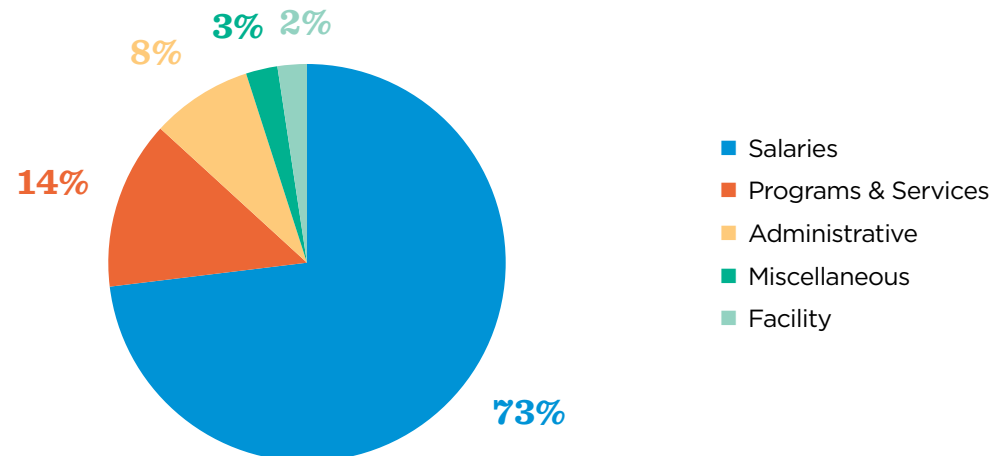
Thank you
for making our work possible.

Beech Brook has been serving children and families for over 170 years – a major feat that could not be accomplished without you, our dedicated donors, and a caring community around us. With your ongoing support, we will continue our legacy of touching hearts and changing lives by meeting the needs of the most vulnerable among us.

For a complete list of our generous donors, along with our sponsors, please visit our website at www.beechbrook.org or scan the QR code below.



EXPENSES





5K Race & Family Fun Run October 10, 2021

For our first in-person fundraiser since the pandemic began, kids and adults alike gathered at Orange City Schools Campus, a new location, for our 11th Annual 5K Race & Family Fun Run!

Whether they ran the 5K course, took a casual 1-mile walk, or simply participated in the family-friendly activities — led by Beech Brook's Emerging Leaders Board members — there was something for everyone! Plus, we were joined by special guests from Ghostbusters Cleveland, the 501st Legion Star Wars Characters, and Super Heroes to Kids — and the kids loved it!



For more information on this year's 12th Annual 5K Race & Family Fun Run

#GivingTuesday Toy Drive November 10, 2021

Thanks to the generosity of our community, we were able to provide toys for hundreds of Beech Brook children at Christmas time. For far too many, whose parents struggle to meet their most basic needs, these were the only toys they received.

It was so touching to see the delight on our staff's faces as they picked out toys for their clients. They, in turn, were moved by the joy they witnessed from the children and their families.



Beech Brook staff member Patricia Jones picks out a gift for one of her clients from the #GivingTuesday Toy Drive.

“Just wanted to say ‘thank you’ from my clients who received a gift. One little girl received a doll. The expression on her face was priceless. She yelled out, ‘This is the tallest doll I’ve ever had!’ And she asked, ‘Could you tell Beech Brook Santa Claus thank you for me?’ Again, we say, thanks much.”



Bash for the Brook June 10, 2022

Over 180 attendees joined us for our reimagined “Bash for the Brook” — a casual summer event at Sapphire Creek Winery and Gardens. The evening was filled with games and fun to raise over \$120,000 for the children and families served by Beech Brook.

We were also joined by Iris, who as a young child was in Beech Brook's School-Based Mental Health program almost 30 years ago. Her fondest memory of Beech Brook was the summer program, where she enjoyed experiences that she would not otherwise have had.



Often fighting and misbehaving, Iris worked with Beech Brook staff (specifically Beech Brook CEO Tom Royer when he was a School-Based worker), to learn new skills, new attitudes and new ways of thinking. The School-Based program helped Iris forge a better path for herself, and eventually, also for her children and her community.

We were reminded how Beech Brook touches hearts and changes lives. Not only the lives of the individuals we serve, but also the lives of generations that follow.



“When someone touches your heart and you get help, your heart gives back by helping others, too.”

- Iris

Watch the video to hear more from Iris

Board of Directors

July 1, 2021 – June 30, 2022

Chair

Victor J. DeMarco

Vice Chair, Administration

Amanda M. Miller

Vice Chair, Finance/Treasurer

Kathryn L. Kaesberg

Directors

Daveda Bencs

Mary Ann Cordiano

Gretchen Dupps

Brad W. Kostka

Rachel F. Lindberg

Kelly McChrystal

Brandon R. Miller

Jennifer A. Mills

Terry W. Owen

Jennifer N. Pinkerton

Robert P. Phillips-Plona

Thomas A. Seifert

Gary M. Small

Alicia C. Trybus

Shawn T. Wright

Charles B. Zellmer

Life Directors

Harry L. Holmes

Kathy C. Pender

G. Walter Stuelpe

Honorary Directors

Nancy Klein

Anthony R. Michel

Jane Q. Outcalt

Gretchen D. Smith

President/CEO

Thomas P. Royer

President Emeritus

Mario Tonti



THANK YOU

TO OUR \$1,000+ BEECH BROOK EVENT SPONSORS!

Because of you, we were able to bring our events back in person this year to help more children and families thrive.



**Alicia & Robert
Trybus**

**Ann & Charles
Zellmer**



**Robert
Phillips-Plona**

**Amanda & Ryan
Miller**



**Tracy & Thomas
Seifert**



3737 Lander Road
Pepper Pike, Ohio 44124



We are proud to announce that Beech Brook has been named a Northeast Ohio Top Workplace three years running by *The Plain Dealer* and cleveland.com!



Beech Brook is a contract agency of the Alcoholism, Drug Addiction and Mental Health Services Board of Cuyahoga County

Beech Brook is accredited by:
The Joint Commission

Beech Brook is licensed by:
The Ohio Department of Mental Health and Addiction Services
The Ohio Department of Job and Family Services

Beech Brook is certified by:
The Ohio Department of Mental Health and Addiction Services

Our Mission

Helping children and families thrive by promoting healthy child development, strengthening the ability to overcome adversity, and enhancing family health and stability

Learn more at www.beechbrook.org and follow us



BeechBrookCleve



@BeechBrookCleve

216.831.2255 • 877.546.1225

