



Beech Brook
HELPING CHILDREN & FAMILIES THRIVE

We Grow Here

Annual Report

July 1, 2024-June 30, 2025

We Grow Here



This year, we celebrate one year in our new **Garfield Heights home**, a move that followed more than a century on our Pepper Pike campus. Our new space reflects both our heritage and our future—continuing our commitment to help children and families thrive.

Just as important, our **Family Center in Cleveland's Central Neighborhood** is a welcoming place where families can **drop in anytime for support**. Together with our school-based and community programs, these efforts allow us to serve more than **10,000 children and families across Northeast Ohio each year**.

What hasn't changed is our mission. Since 1852, Beech Brook has worked to **strengthen families, support children, and build healthier communities**.

We Grow Here — by building resilience, nurturing potential, and creating lasting change.

These photos reflect our journey—from the historic Pepper Pike campus that shaped our legacy to the new Garfield Heights building that carries us forward.

Where children and families grow, we all thrive together.



Letter from Leadership

Beech Brook has been part of our lives for as long as we can remember. For Tom, the connection began with his grandparents who served as house parents in the 1950s, passing on lessons of patience, compassion, and community. For Muffy, it started through her mother, a board member and later development director, and grew even deeper when she volunteered as a high school senior in a special education classroom, where she saw firsthand the resilience of children and families.

Those early experiences—Tom's rooted in family legacy and Muffy's in both family and service—sparked commitments that have only grown stronger with time.

Together, we have witnessed Beech Brook evolve with the changing needs of our community. From the cottages and classrooms of decades past to today's Family Center and new headquarters, the setting may change but the purpose remains the same: helping children and families thrive.

At Beech Brook, growth happens every day: children building resilience, families finding strength, and communities planting seeds of hope. We see it in a child finding confidence at school, a parent gaining new tools to strengthen their family, or a foster child experiencing the safety and joy of a nurturing home.

We see it in the dedication of our staff, who bring passion and skill to every interaction, and in the generosity of donors and partners who sustain this vital work.

For us—and for thousands of families across Northeast Ohio—Beech Brook is more than an organization. It is a lifeline, and a place where we all grow. Looking back, we recognize how Beech Brook has shaped not only the children and families it serves, but also those of us who are privileged to lead and support its mission. Looking ahead, we are filled with gratitude for everyone who stands with Beech Brook, and excitement for the countless lives still to be touched.

For 173 years, Beech Brook has been a place where resilience is built, potential is realized, and hope is renewed. As we continue helping children and families thrive, we know that when they flourish, our entire community flourishes with them.



Muffy Kaesberg
Board Chair



Thomas P. Royer
President/CEO



Kathryn L. (Muffy) Kaesberg
Board Chair



Thomas P. Royer
President/CEO

A Place to Grow:

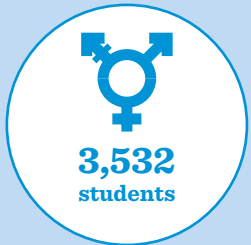
Beech Brook's Family Center

For nearly three decades, Beech Brook's Family Center has been a cornerstone in Cleveland's Central Neighborhood, one of the city's most challenged communities. Serving more than 2,000 parents and caregivers annually across 40+ zip codes, the Family Center provides education, prevention, and early intervention programs that strengthen families, prevent abuse and neglect, and foster stability. In partnership with hospitals, libraries, childcare providers, and community organizations, Beech Brook helps families grow stronger and children thrive.



96%

of parents said Beech Brook's Family Center services and programs gave them the confidence to change their parenting and improve their lives.



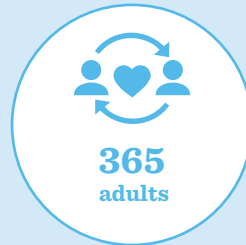
Comprehensive Sex Education

Classes for kids ages 10-18 about their physical, social and emotional changes based on factual and age-appropriate information



Stewards of Children & Body Safety Training

Various training for children, parents, caregivers and teachers to recognize the signs of and prevent child sexual abuse



Parenting Classes at the Family Center

A variety of groups for parents that focus on topics such as positive discipline, anger management and healthy communication



Anger/Stress Management

Parenting classes for those who struggle with anger, helping them learn how to manage their emotions in healthier, more positive ways



S.T.E.P.S.

Teaches parents the importance of play in early childhood and simple activities to boost brain development in babies and toddlers

80%

of parents reported that their family was doing better or much better since starting the program

96%

of parents said they learned ways to manage their anger without becoming physically or verbally abusive

85%

of parents said the program changed the way they think about how a child's brain develops



Other Education, Prevention & Early Intervention Services

Early Childhood Mental Health Services

Helps young children up to age eight address any behavioral or emotional difficulties early, when they are the most flexible and able to change

Technical Assistance for Child Care Centers

Prevents children from being expelled due to challenging behaviors

Family Stability Homeless Prevention

Helps prevent evictions and homelessness by providing a wide range of social services to families who are at risk of losing their housing.

Police Assisted Referral (PAR)

Mental health professionals support the child and family when police are called to prevent further acts of violence.

Parent Cafés

Provide parents with a chance to relax, make friends, and share worries and concerns with other parents.

Supportive Visitation

Coaches help parents prepare to get their child back when the child has been removed from their home and taken into custody.

Outpatient Counseling Services

Provide therapy and support for children and families facing challenges like ADHD, anxiety, depression, trauma, and behavioral issues—helping them heal, grow, and get back on track.

College Now

Telehealth services for college students (many are the first in their family to attend) to help manage their feelings and stay on track with their studies.

Giving Kids the Tools to Thrive – Growing Through Prevention

Spotlight on Comprehensive Sex Education

Too many children in Ohio grow up without reliable information about consent, healthy relationships, or abuse prevention—because schools aren’t required to provide sex education. Beech Brook has stepped in for over 50 years, delivering trusted Comprehensive Sex Education (CSE) that keeps kids safe and informed.

Our prevention programs work. Children learn to recognize risks, set boundaries, and know where to turn for help. Parents leave with tools to protect their families. Teachers see students asking the tough questions they’d never raise anywhere else. The result: stronger, safer communities.

What sets Beech Brook apart is not just what we teach, but the safe space we create for kids, families, and educators to learn and grow.

This work is only possible with your support. Together, we can reach more children, more families, and more schools—building a future where every child grows up safe, informed, and empowered.



Meeting Families Where They Are

The Family Needs Store

At Beech Brook, growth can take many forms. Sometimes it's a father learning to create stability for his daughters after years of struggle. Sometimes it's a grandmother finding new strength as she raises her grandchild with love and resilience. And sometimes, it's as simple—and as powerful—as a parent walking into the Family Center and knowing they will leave with the diapers, formula, or basic essentials their children need.

In late 2024, Beech Brook opened the Family Needs Store inside the Family Center—an idea born directly from the voices of parents and caregivers who shared the impossible trade-offs they face between paying rent, putting food on the table, or buying diapers and formula.

In this dedicated space, shelves stocked with essentials are more than donations; they are statements of solidarity, reminding families they are not alone.

By providing free access to diapers, wipes, detergent, clothing, school supplies, and more, the Family Needs Store eases daily stresses and allows parents to focus on what matters most—raising healthy, thriving children.

And because growth is never just about “things,” families are also connected to Beech Brook’s broader circle of care, including parenting classes and early childhood mental health services.

The Family Needs Store is one more way Beech Brook ensures that We Grow Here—together as families, as a community, and as a source of strength for the children who will shape our future.



Family Needs Store

The Family Needs Store has already supported more than



150
children



128
families



Learn more about the
Family Needs Store



School-Based Services

Growing Families Through School-Based Mental Health Services

Offered at more than 50 schools across Cuyahoga, Lorain, Summit and Geauga counties

At Beech Brook, we know growth doesn't stop in the classroom—it flourishes at home, too. Our school-based services support children where challenges surface, helping them manage emotions, build coping skills, and find stability to succeed both academically and socially.

But true growth extends beyond the student. By engaging parents and caregivers, we strengthen families with strategies for routines, boundaries, and communication.

"If the family isn't involved, the child really can't succeed on their own." - LaTanya Perdue, School-Based Supervisor

This family-centered approach plants the seeds of lasting change. Children gain confidence, parents grow in their ability to guide, and classrooms become more positive learning environments. Together, families, schools, and communities thrive—growing toward a healthier tomorrow.

Beech Brook's School-Based Mental Health Services provides children with the extra support they need.

Through referrals from teachers and parents, our staff works closely with students, addressing barriers to learning. This support fosters positive transformations in schools, families, and communities. By empowering students with the help they need, we instill hope, break the cycle of struggle, and pave the way for every child to thrive academically, emotionally, and socially.

"Having this service is so extremely necessary and important for our many students who have experienced a tragic event. This service helps the students and teachers. I am so happy that we have this service, it is so very much appreciated." - Teacher in Bedford School District



3,776 children, parents & staff
School-Based

Therapists and clinical behavioral specialists work with children in their schools, along with teachers and school administrators, to address mental or behavioral problems that are getting in the way of learning.



1,415 children
REACH Therapeutic Behavioral Support

In schools, homes, and the community, mental health professionals help children and families learn critical life skills, such as recognizing and labeling their feelings, conflict resolution, and anger management to help reach children where they need it most.

Schools that offer these services see improved attendance and academic performance, along with better behavior and social interactions.

Beech Brook's Partnerships

with School Districts

We partner with school districts to give students the tools and support they need to overcome social-emotional and behavioral challenges. These services help young people build confidence, resilience, and a vision for a brighter future. Many programs are student-led, empowering them to take charge of their well-being with guidance from our team. Services are available to any student through district referral or self-referral, without requiring a formal mental health diagnosis.

Our interventions include individual counseling, family support, skill-building groups, and parent education.

We also connect students with community resources and lead prevention initiatives. Beech Brook staff provide training for parents and educators on topics such as mental health, stress management, suicide prevention, and wellness activities.

Through these efforts, growth extends beyond the classroom—strengthening students, families, and communities so that each one has the chance to thrive.

Beech Brook Partner	Impact
Chardon Local Schools	231 students
Orange City School District	305 students
Twinsburg City School District	413 students



Foster Care

Helping Children in Foster Care Heal, Grow and Thrive

When children enter foster care, they are searching for stability and love. At Beech Brook, we provide the nurturing environment where children can heal, families can strengthen, and futures can blossom. Through training, support, and care, we help transform cycles of hardship into resilience and hope.

In the past year:



62

Children with Beech Brook Foster Families



29

New placements

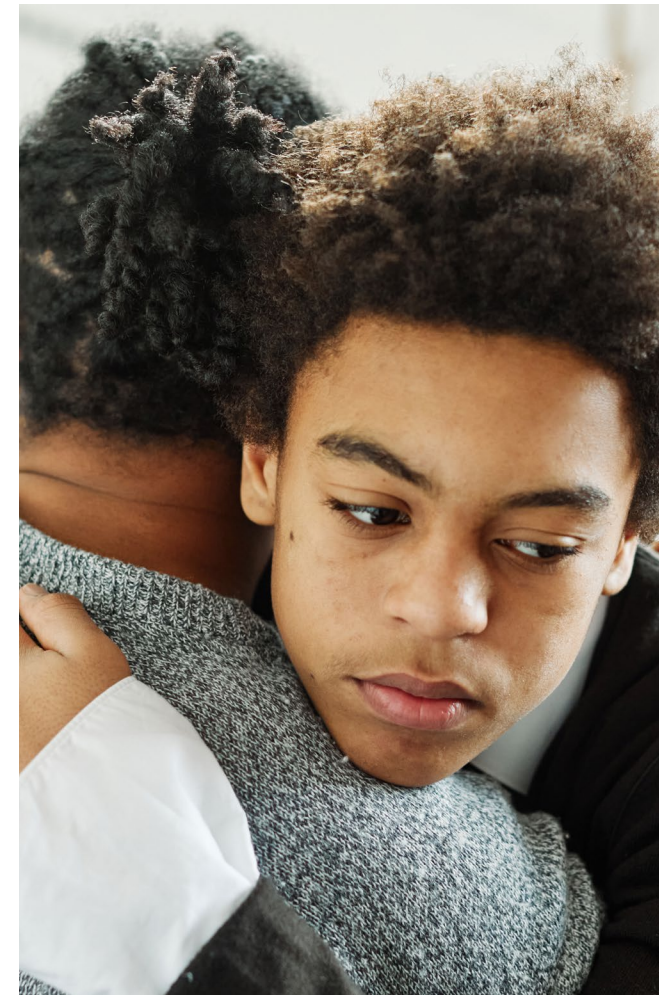
Respite Care: Giving Parents a Break, Helping Children Thrive

For families managing behavioral or mental health challenges through OhioRISE—a Medicaid program that connects children with complex needs to specialized overnight, in-home, and community-based support—Beech Brook’s Respite Care Specialists and licensed foster parents provide the steady support caregivers need. By stepping in with compassionate, reliable care, whether at home, in a certified Beech Brook respite home, or in the community, we give parents a much-needed break for self-care and essential tasks, helping them prevent burnout and regain strength.

In these moments, **we grow here together:** children thrive in safe, nurturing environments that build confidence and resilience, while caregivers return renewed to continue the hard but rewarding work of parenting.



In the past year, we have provided respite for **43 kids** (for a total of **1,318 hours**)



More than a Case File: Creativity and Hope through Art

Spotlight on Beech Brook's Foster Care Program

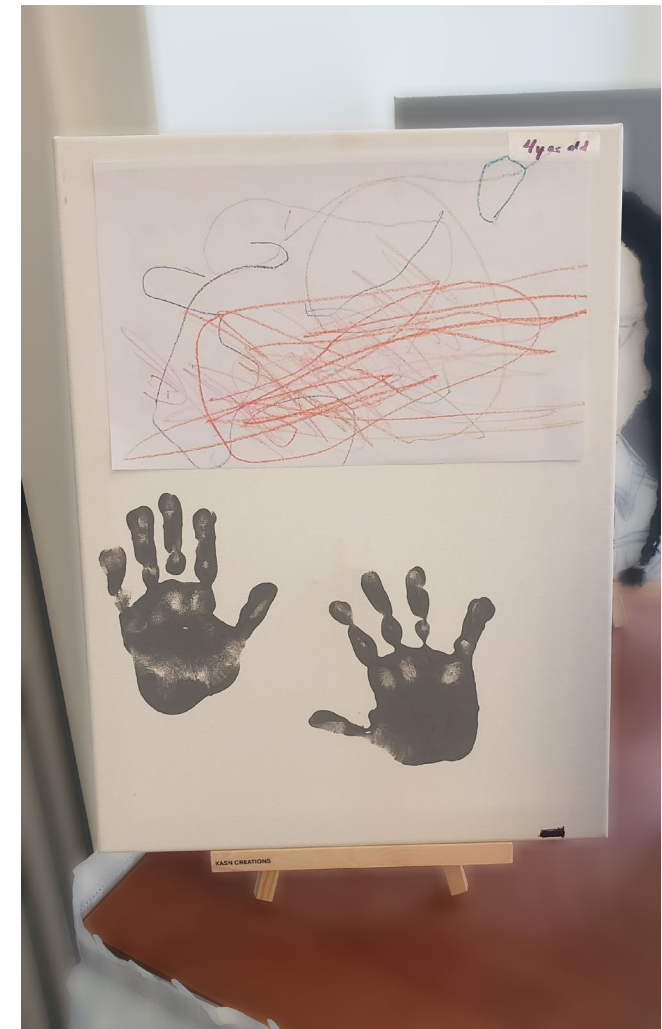
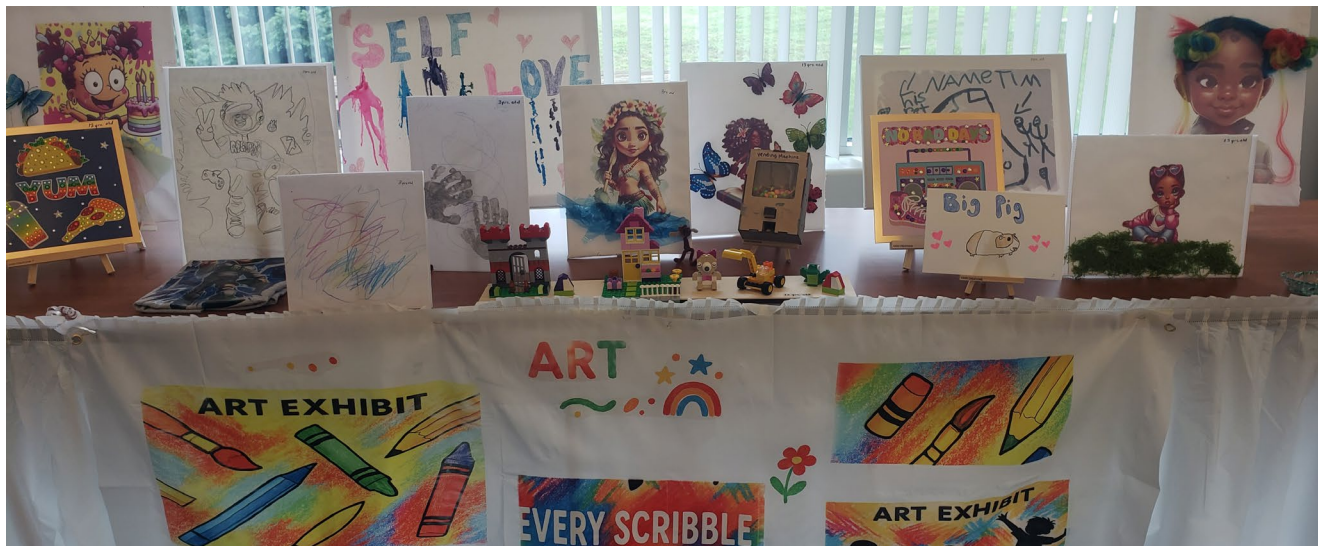
At Beech Brook, we know children in foster care deserve more than safety—they deserve the chance to experience the joys of childhood. That's why Wrap-Around Specialists Karen Noisette and Brooke Fassnacht launched a creative art project, giving children the freedom to paint, design, and build something entirely their own.

For one four-year-old, it was his first time fingerpainting. At first hesitant, he soon dove in, proudly showing off his colorful creation. In that moment, he grew—not just in skill, but in confidence and courage.

This is the heart of Beech Brook's work: ensuring children in foster care are safe and supported, while also nurturing creativity, self-esteem, and identity.

"Children are more than their case files. Each has something beautiful to express. These projects are more than crafts—they're reminders of resilience, hope, and the capacity every child has to dream."
– Karen Noisette, Wrap-Around Specialist

At Beech Brook, every brushstroke, every expression, every spark of confidence is a moment where a child grows—discovering their voice, their courage, and their potential.



Decades of Dedication

Stories of growth, purpose, and impact from Beech Brook's long-time staff

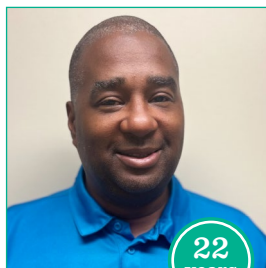


11
years

LATANYA PERDUE

Clinical Lead Supervisor
11 years at Beech Brook

"I've always felt valued here—Beech Brook really listens to my expertise and knowledge. Having supportive supervisors and being able to grow makes me want to stay and give my best to the families we serve."



22
years

SAM PITTS

Lead Operations at the Family Center
22 years at Beech Brook

"Beech Brook has been such an important part of my life, giving me the chance to grow, adapt, and connect with people from so many different backgrounds. I've learned the power of empathy, collaboration, and resilience, and I'm deeply grateful for the support and stability Beech Brook has shown me—especially during challenging times. It's a privilege to continue being part of a mission that not only serves the community, but also truly cares for its people."



24
years

PAULINE CONGENI

Clinical Lead Therapist
24 years at Beech Brook

"Being a part of Beech Brook has been a transformative experience. Making a connection with clients has been more than a job — it has been a significant chapter in my life."

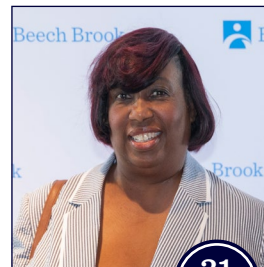


25
years

NICOLE BOROWY-SALAMON

Client Rights Advocate & Program Manager,
Comprehensive Sex Education
25 years at Beech Brook

"Beech Brook has provided me with a sense of purpose and direction, helping me both personally and professionally. I have learned patience, empathy, to listen without judgment and to be an advocate for others while at the same time strengthening my own resilience."

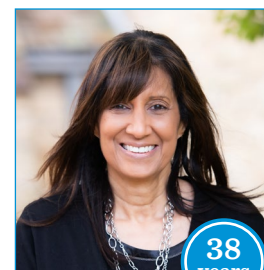


31
years

DEBRA BROWN

Parenting Program Manager at the Family Center
31 years at Beech Brook

"Being part of Beech Brook has helped me grow in resilience and empathy. Working with families through their challenges has deepened my understanding of different perspectives and the importance of meeting people where they are. This journey has shaped not only how I approach my work, but also how I connect with others. I am grateful for the dedication of my colleagues and proud to be part of an agency like Beech Brook."



38
years

TERRI DAVIS

Senior Director Prevention and Early Intervention
38 years at Beech Brook

"Overall, my time at Beech Brook has not only expanded my professional skill set but has also clarified my passion for supporting and advocating for children and families. Supporting families and children that have dealt with multiple traumatic experiences has deepened my understanding and compassion."



43
years

JOANN VIDMAR

Central Office Receptionist
43 years at Beech Brook

"I highly respect the opportunity to work at a premier children's agency that is so well respected and recognized in the community. Beech Brook has strengthened my awareness of children's mental health and family needs."

Growing the Future: How You Can Help

Just as Beech Brook has nurtured generations of children, families, and dedicated staff who have grown their careers here, your support ensures that our mission continues to thrive well into the future. In the year ahead, there are several meaningful ways you can make an impact:

Join the Circle of Hope

Beech Brook's monthly donor program, Circle of Hope, gives you the opportunity to make a lasting difference through consistent support. By giving monthly, you provide steady, reliable resources that help children and families grow stronger every day.

For the cost of a cup of coffee...

You can give hope that grows every month. Join our Circle of Hope and make a lasting difference for children and families at Beech Brook.



Leave a Legacy Through Planned Giving

Create a lasting legacy by including Beech Brook in your estate plans. Through a bequest, trust, or other planned gift, you can ensure our mission continues for generations—helping children and families grow, heal, and thrive well into the future.



Learn more
about the
Circle of Hope



Learn more about
Planned Giving



2024 Award Winners



Jennifer Bartholomew

**Director of Community Programs,
Partnership for a Safer Cleveland**

Recipient of the *Suzanne Brookhart Harrison
Award for Exceptional Service to Children*

Pictured center with Tom Royer (left)
and Terri Davis (right) of Beech Brook



Ohio Children's Trust Fund Great Lakes Regional Prevention Council

Recipient of the *Community Partnership Award*

Pictured left to right: Stephanie Pennza, Community
Outreach Coordinator, and Nicole Sillaman,
Executive Director



Choose Your Adventure Raffle

Fall 2024

Our first-ever sold-out *Choose Your Adventure Raffle* sold 200 tickets and raised \$20,000. Proceeds directly support Beech Brook's mission to strengthen our community and help children and families thrive.

#GivingTuesday Toy Drive

November 2024

Thanks to the generosity of our community, our 2024 #GivingTuesday Toy Drive brought in almost 1,500 gifts that went to children served in Beech Brook's School-Based program and Beech Brook Family Center's annual toy distribution.



Family Fun Day

June 27, 2025

Over 200 attendees joined us for Beech Brook's Family Fun Day in Cleveland's Central neighborhood. From music and food to community resources and smiling faces, it was a day full of connection and support.

Family Fun Day was generously sponsored by the Ohio Children's Alliance and the Ohio Department of Mental Health & Addiction Services.



Bash for the Brook

June 6, 2025

Thank you to everyone who joined us for our 4th Annual "Bash for the Brook!" With your help, we raised close to \$140,000 to support the most vulnerable children and families across Northeast Ohio.



Thank you for making our work possible

For over 170 years, Beech Brook has served children and families—a legacy made possible by your support and a caring community. With your help, we continue to be a place where **“We Grow Here,”** nurturing resilience, breaking cycles of adversity, and strengthening families. **Together, we’re helping children and families thrive and creating brighter futures.**

For more information on donation or sponsorship opportunities, please contact Heidi Lang at hlang@beechbrook.org or 216.831.2255, ext. 2240.

INDIVIDUAL DONORS (\$1,000+)

Jennifer and James Albanese
Anonymous
Kim Barton
Kimberly Bentley
Robert Bentley
Ronald and Pamela Bohlander
Larry and Ellen Chernikoff
Jeff Cheshire
William Conway
Maryann Correnti
Victor and Iris DeMarco
Michael Groner
Robert and Megan Fellingner
Kelli and Michael Guhde
Harry and Sandra Holmes
Richard and Annie Hubbard
James and Kathryn Kaesberg
Jennifer Mills and Doug Kohler
Rachel and Luke Lindberg
Kelly McChrystal
Thomas and Anne Merriman
Anthony and Carol Michel
Brandon R. Miller
Amanda and Ryan Miller
Jane and Jon Outcalt
Terry and Edda Owen
Jim and Kathy Pender
Craig and Marla Petti
Bob and Tom Phillips-Plona
Thomas and Jennifer Royer
Doug and Lisa Schattinger
Tom and Tracy Seifert
Robert and Nora Shlachter
Mark and Lynn Singer
Gary and Jane Small

John and Ann Steinbrunner
Walter and Judy Stuelpe
Robert and Kristin Tull
Robert and Brenda Weltman
Kim Weltman
Chuck and Ann Zellmer

FOUNDATIONS/CORPORATIONS

Abington Foundation
The A.H. and Julia W. Shunk Fund
The Andrews Foundation
Anonymous
Eva L. & Joseph M. Bruening Foundation
Cleveland Marathon Charities
Alice McHardy Dye Fund
Eaton Charitable Fund
environments 4 business/Welty Enterprises
Elyria Charities Inc.
Frank Hadley & Cornelia Ginn Foundation
Gould Inc. Foundation
The Hankins Foundation
The Helen Wade Greene Charitable Trust
Huntington
The Kelvin and Eleanor Smith Foundation
The Meyer Company
Ohio Children’s Alliance
Ohio Children’s Trust Fund
Ohio State Waterproofing, Inc.
Douglas Perkins Fund
Reuter Foundation
PRADCO
Sedgwick Family Fund
Summit Maids Management, LLC
Thatcher Family Fund
Thomas H. White Foundation

Treu-Mart Fund
The Veale Foundation
Clara Weiss Fund

GOVERNMENT

ADAMHS Board of Cuyahoga County
Ashtabula County Children Services
Better Health Partnership
Child & Family Health Collaborative
College Now
Columbiana County Department of Job & Family Services
Cuyahoga County Board of Health
Cuyahoga County Children and Family Services
Cuyahoga County Family & Children First Council
Geauga County Job and Family Services
Invest In Children
Lake County Job and Family Services
Lorain County Children Services
Mahoning County Children Services
Medina County Job and Family Services
Mental Health, Addiction and Recovery Services Board of Lorain County
Montgomery County Children Services
Ohio Child Care Resource & Referral Association (OCCRA)
Ohio Department of Medicaid
Ohio Department of Mental Health & Addiction Services
Portage County Child & Adult Protective Services
Stark County Job and Family Services
Starting Point

Stride
Summit County Children Services

SPONSORS

\$10,000+
PRADCO

\$5,000
Kaulig Giving
WesBanco

\$3,000
BakerHostetler
Clearstead
Creative Planning
KeyBank
RSM US LLP
Lynn and Mark Singer
Wickliffe Fraternal Order of Eagles

\$1,000
Rachel and Luke Lindberg
Bob and Tom Phillips-Plona



Board of Directors and Leadership

Chair

Muffy L. Kaesberg

Vice Chair, Administration

Kelly A. McChrystal

Vice Chair, Finance/Treasurer

Wesley M. Lanzola

Directors

Daveda Bencs
Beth Crean
Victor J. DeMarco
Jessica M. Kerrigan
Brad W. Kostka
Rachel F. Lindberg
Amanda M. Miller
Brandon R. Miller
Jennifer A. Mills
Terry W. Owen
Michelle M. Pike
Jennifer N. Pinkerton
Robert P. Phillips-Plona
Thomas A. Seifert
Mark I. Singer
Gary M. Small
Elaine Suarez
Alicia C. Trybus
Charles B. Zellmer

Honorary Directors

Nancy Klein
Anthony R. Michel
Jane Q. Outcalt
Gretchen D. Smith

Life Directors

Harry L. Holmes
Kathy C. Pender
G. Walter Stuelpe

Executive Staff Leadership

President/CEO

Thomas P. Royer, MPA

Chief Administrative Officer

LaVisa Bell, MSM, CPHQ

Executive Vice President

Kim Weltman, MSSA, LISW-S

Chief Financial Officer

Jennifer Albanese, CPA

Chief Human Resource Officer

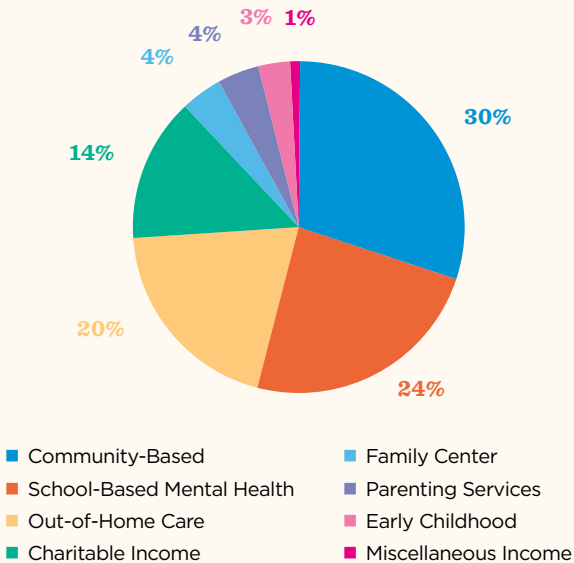
Peggy Coltz, MSM, PHR

Revenue & Expenses

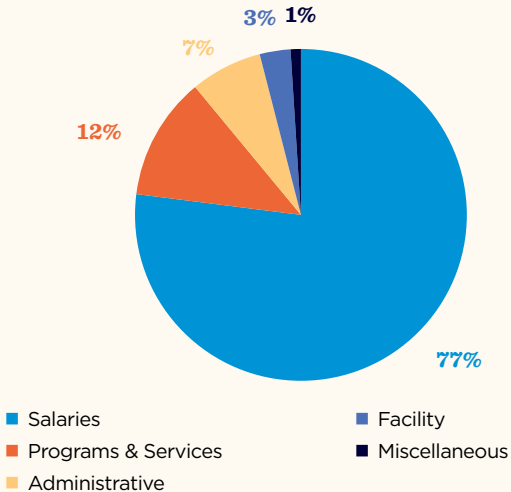
July 1, 2024 – June 30, 2025

Total Operating Revenue:
\$13,098,093

OPERATING REVENUE



EXPENSES





13201 Granger Road, #8
Cleveland, Ohio 44125

Non-Profit Org.
U.S. Postage
PAID
Cleveland, OH
Permit No. 1552



**Where children and families grow,
we thrive together.**



Beech Brook is a contract agency of the Alcohol, Drug Addiction and Mental Health Services Board of Cuyahoga County

Beech Brook is accredited by:
The Joint Commission

Beech Brook is licensed by:
The Ohio Department of Mental Health and Addiction Services
The Ohio Department of Job and Family Services

Beech Brook is certified by:
The Ohio Department of Mental Health and Addiction Services

Our Mission

Helping children and families thrive by promoting healthy child development, strengthening the ability to overcome adversity, and enhancing family health and stability.

Learn more at www.beechbrook.org and follow us on



216.831.2255 • 877.546.1225

